

Installation Manual

A-2960 ARNOTT REAR AIR SPRING AUDI A6 (C6)



Congratulations on your purchase of an Arnett® air suspension product. We at Arnett Incorporated are proud to offer a high quality product at the industry's most competitive pricing. Thank you for your confidence in us and our product.

Proper installation is essential to experience and appreciate the benefits of this system. Please take a moment to review these installation instructions before you begin to install these components on your vehicle. The removal and installation of air suspension products should only be performed by a fully qualified, ASE Certified, professional.

It is equally important to be aware of all necessary safety measures while installing your new Air Suspension System. This includes proper lifting and immobilizing of the vehicle and isolation of any stored energy to prevent personal injury or property damage.

"Engineered to Ride, Built to Last®"



WARNING: *The air suspension system is under pressure (up to 10 bar, or 150 lbf/in). Verify pressure has been relieved and disconnect power to the air suspension system prior to disassembly. Do not allow dirt or grease to enter the system. Always wear standard hand, ear, and eye protection when servicing the air suspension system.*

Arnett® is committed to the quality of its products. If you have a question or problem with any Arnett product, please contact Arnett by calling **800-251-8993** during normal business hours or email techassistance@arnottinc.com. (In the EU please call +31 (0)73 7850 580 or email info@arnotteurope.com).

GENERAL INFORMATION:

Reading this manual signifies your agreement to the terms of the general release, waiver of liability, and hold harmless agreement, the full text of which is available at www.arnottinc.com.

- Not to be stored below 5°F (-15°C) or above 122°F (50°C).
- Avoid damage to air lines and cables.
- Removal and installation is only to be performed by fully qualified personnel.
- Use car manufacturer's diagnostic software.

CAUTION: *Damage to the vehicle and air suspension system can be incurred if work is carried out in a manner other than specified in the instructions or in a different sequence.*



To avoid the possibility of short circuits while working with electric components consult your owner's manual on how to disconnect your battery.



Consult your vehicle owner's manual, service manual, or car dealer for the correct jacking points on your vehicle and for additional care, safety and maintenance instructions. Under no circumstances should any work be completed underneath the vehicle if it is not adequately supported, as serious injuries and death can occur.

AIR SPRING REMOVAL

1. RAISE THE VEHICLE.
2. REMOVE THE REAR WHEEL. (FIGURE A)



FIGURE A

3. LOCATE AND DISCONNECT THE AIR LINE FROM BEHIND THE AIR SPRING BY UNSCREWING THE AIRLINE FITTING. (FIGURES B, C)



FIGURE B

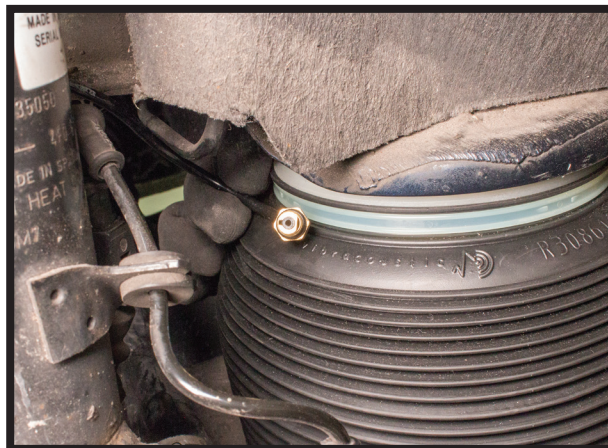


FIGURE C

4. LOOSEN AND REMOVE LOWER SWAY BAR END LINK NUT AND BOLT. (FIGURES D, E)

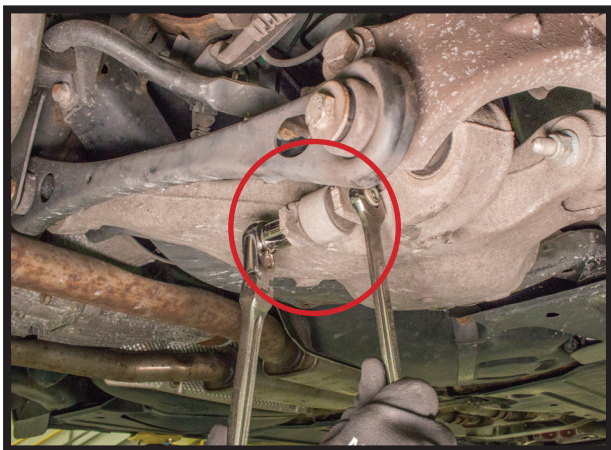


FIGURE D



FIGURE E

5. LOOSEN AND REMOVE THE LOWER SHOCK MOUNTING BOLT. (FIGURE F)



FIGURE F

6. DISCONNECT THE WHEEL SPEED SENSOR ELECTRICAL CONNECTOR. (FIGURE G)



FIGURE G

7. LOOSEN AND REMOVE THE RETAINING SCREW FROM THE BOTTOM OF THE AIR SPRING. (FIGURES H, I)

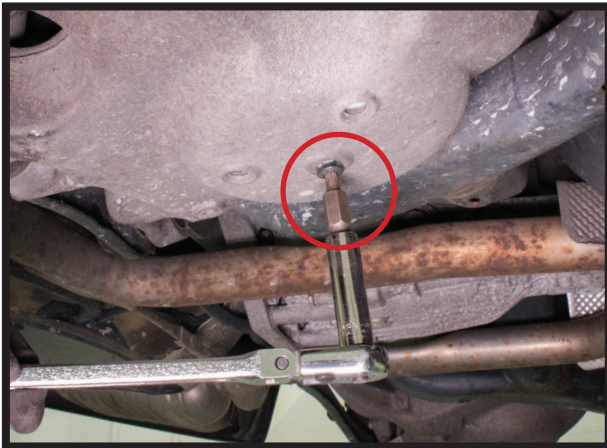


FIGURE H



FIGURE I

8. USE A PRY BAR TO FLEX THE SUSPENSION TO ALLOW REMOVAL OF THE AIR SPRING. (FIGURE J)



FIGURE J

9. REMOVE THE AIR SPRING FROM THE VEHICLE. (FIGURE K)



FIGURE K

10. REMOVAL COMPLETE.

AIR SPRING INSTALLATION



Tighten all nuts and bolts to manufacturer's specifications during the installation process.

1. INSTALLATION IS IN THE REVERSE ORDER OF AIR SPRING REMOVAL.

NOTE:

*BE SURE TO FOLLOW THE INCLUDED INSTRUCTIONS FOR PROPER USE OF THE PREINSTALLED AIR LINE FITTING.
IMPROPER USE MAY DAMAGE THE PRODUCT AND VOID YOUR WARRANTY.*